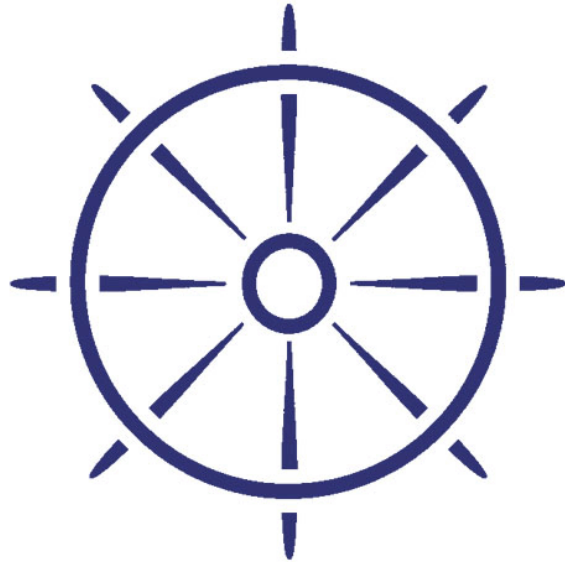


Colona Liveboards



Thailand – Myanmar Andaman Islands

2010 – 2011 Season

9 day/9 night Thailand & Burma (Myanmar) Cruise aboard MV Giamani



Mergui Archipelago - Ko Bon - Ko Tachai - Richelieu Rock



Many thanks for your enquiry into the 9 day/9 night cruise aboard MV Giamani with Colona Liveboards. This itinerary is made for those who would like to explore something new and relatively uncharted on the dive map.

During this trip you can dive sites in Myanmar such as Shark Cave, Black Rock, North Twin, Western Rocky, and the Burma Banks. With a plethora of dive sites there is a great mixture of hard and soft coral reefs, pinnacles, small islets with several large and spacious cavern type swimthroughs.

Though marine life in Myanmar has previously suffered through unchecked fishing practices, this now seems to be under control, leaving many undisturbed sites.



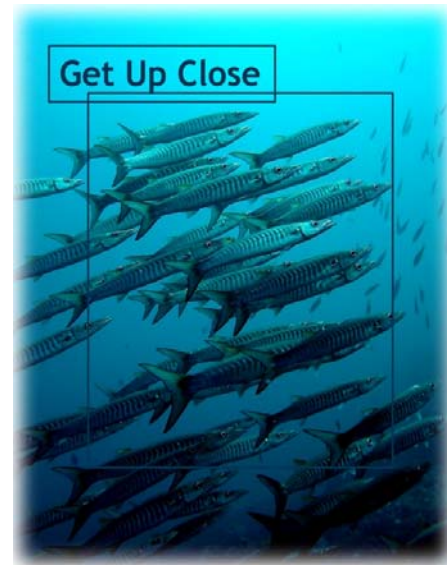
On the sites within Myanmar you can see snappers, surgeon fish, goat fish, barracuda, bat fish and many more. The macro life here is excellent too, with a large variety of nudibranchs as well as seahorses, ghost pipefish, cowries and shrimp in every crack and crevice.

Shark numbers in Myanmar seem to be on the rise too. Though many dive books (often penned more than 10 years ago and never updated) overstate the case, the last few seasons have produced the goods with guests diving and snorkeling with whale sharks, manta rays, white tip reef sharks, grey reef sharks, and nurse sharks as well as eagle rays and marbled whip rays.

Colona Liveboards guests are encouraged to visit land whenever possible between dives, and Myanmar is no exception. While travelling large distances through the Mergui Archipelago can make this difficult at times we still try to time your cruise so you can go ashore at least once if you wish. Also, while checking out of Myanmar there may also be the chance to visit the port of Kaw Thaug for that authentic border town experience.

Several days of diving in Thailand offers some of the best diving from the Northern Thailand itinerary. With at least three dives on Richelieu Rock, as well as dives on Ko Tachai and Ko Bon guests have the chance of diving with leopard sharks, manta rays, seahorses, great barracuda, and large schools of vastly varied reef fish.

At the end of this 9 day itinerary, guests will disembark in Thap Lamu, 1 hour north of Phuket leaving a short transfer to your hotel on Phuket.





Your Trip Itinerary

Departure Day		
16:00 - 17:15		- Pick up from Hotel or Airport as required
19:00 - 20:00		- Board MV Giamani, welcome briefing and introduction to your crew
		- Depart for Ko Bon while having dinner
Day	No of dives	Schedule and Dive Sites
1	4	After an all inclusive dive and safety briefing the diving begins on the island of Ko Bon, just north of the Similan Islands. After two dives you will head north for two more on Ko Tachai. A possibility of your first beach visit in the afternoon depending on tide and conditions.
2	2	Dives five and six are early dives on the fantastic Richelieu Rock, you will then cruise to the ports of Ranong and then Kaw Thaug to complete border formalities for Myanmar. Once everyone is checked in you will cruise into the Mergui Archipelago over dinner.
3	4	A fantastic first day in Myanmar with dive seven around Rocky Island before heading for two day dives at Shark Cave. Dive ten will often be a <i>night or sunset dive</i> here as well.
4	4	Prepare for some very exciting and varied diving today with four dives around the famous Black Rock that can include everything from Manta Rays to Sea Horses and anything in between. Fingers crossed!!!
5	4	Heading out from the Archipelago a little your diving on day five will usually be centred around the islands of North and South Twin, generally with two dives on each.
6	4	4Heading south today, conditions and diver preference will likely decide the day with a choice of several islands (McCarthy, St George's Rock etc...) and pinnacles (Sea Fan Forest) to choose from but it is more than likely that you will end the day with two dives on Western Rocky.
7	2	As we make our way to port again dives twenty three & twenty four are likely to be Western Rocky and North Rocky, a fine good bye to Myanmar. More border formalities as we cross back into Thailand.
8	4	Two more dives at the world famous Richelieu Rock this morning before a short cruise south for a return to Ko Tachai for twenty seven & twenty eight.
9	2	A slightly earlier start today with dive twenty nine on Ko Bon (if conditions are right, the fabulous pinnacle!!). Your final dive (number 30!!) will then likely be on the Boonsung wreck on the way in to port!! Disembarkation at Thab Lamu approx. 15:00 with hotel return expected from 16:30 onwards.

The above itinerary is purely an example. Other dive sites and island visits may be substituted in or out without notice at the discretion of the Cruise Director or based on time and prevailing weather conditions



About Thailand and Myanmar

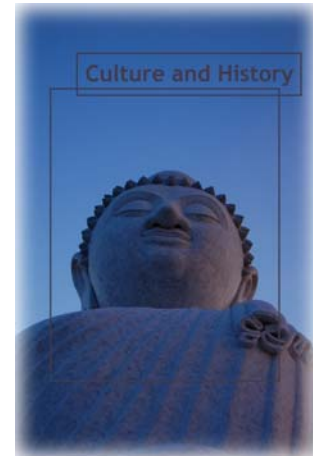
Thailand



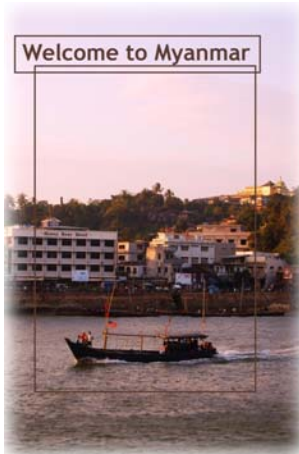
Thailand is a massively popular tourist destination that has something for all the huge number of visitors that arrive here each year. The major draws are usually the beautiful beaches, clear azure waters and great climate, as well as the amazing scenery across the whole country and the seemingly endless islands and temples. But there is more. Thailand has a fascinating history and civilisation with masses of culture, and a hugely friendly population. The low cost of living, lively nightlife, and great food is also a big draw.

The vast majority of the country is land locked to the north with borders on Myanmar, Cambodia and Laos, and there are countless places to eat up an entire holiday here including the capital Bangkok, Ayutthaya, Kanchanaburi, Chiang Rai and Chiang Mai. But it's the peninsular to the south that links with Malaysia and on to Singapore where the fantastic scuba diving opportunities lie. On the west side of the peninsula lies Phuket, 'the Jewel of the Andaman', which is in reality only an island by a matter of a few hundred yards, though serendipity has placed it within reach of some of the finest scuba diving in Asia.

Colona Liveboards always endeavour to provide up to date information, but it is always worth checking with www.tourismthailand.org, the Official Site for Tourism in Thailand, if in doubt.



Myanmar (Burma)



While there has been liveaboard diving in Myanmar for a number of years (Colona Liveboards has been here since 2007) the country is still shy of mass tourism in general. But, because so few operators are allowed in the area, new gems are being discovered all the time. On MV Giamani we are constantly exploring new areas for diving and you could be with us!

Myanmar has land borders with Bangladesh, India, China, Laos, and Thailand and also has a huge swathe of the Andaman Sea to the west. One of South East Asia's largest, most diverse, and yet unknown countries, Myanmar has everything from sparkling islands in the Andaman Sea to the south right up into the snow-capped heights of the Eastern Himalayan mountain range.

Still now Myanmar remains one of the most mysterious and beguiling travel destinations in the world (ask a friend about Myanmar and see if they've even heard of it). And although it is a land of breath-taking beauty and charm it is still now not eager to enter the modern world.





Things to Know and Frequently Asked Questions

International Flights

There are two major airports in Bangkok, with all international flights and many domestic flights arriving to the new international airport of *Suvarnabhumi* (airport code BKK). Most major airlines fly direct to at least Bangkok, and often to Phuket. Thai Airways International (THAI) is the national airline and is regarded as world class, with other highly regarded local carriers being Malaysian Airlines and Singapore Airlines who have multiple flights to Bangkok and Phuket daily.

Phuket also has an international airport (airport code HKT), with at least five flights a day (this varies from high-season to low-season) arriving from Bangkok year-round. Phuket also welcomes flights from Hong Kong, Japan, Taiwan, Singapore, Malaysia, and certain parts of Europe to its airport.

Internal Flights

If you have a connecting flight to Phuket from Bangkok then it can leave from either *Suvarnabhumi* (BKK) or from the old international airport of *Don Mueang* (airport code DMK). Please check your tickets, transfer times, and lay-over times between flights as passage from one airport to the other can be time consuming and travel agents will not always point out the differences between the two.

There are a several discount and budget domestic airlines in Thailand which can be good as long as you don't want to change your travel plans. You can save 50% or more using these carriers if you book early but remember that they usually limit your luggage weight to 15kg (33lbs). For many divers this is simply not enough and by the time you pay the over weight fees, you may not end up saving any money. Always check the small print before booking.

It is strongly advised that you arrive in Phuket at least one day prior to boat departure. This means that you can avoid most potential problems and it will also allow you time to acclimatise before heading out on the trip. Also *remember the '24 hours after diving' rule* when booking your return flights.

Visa Requirements

Thailand

All travellers to Thailand must have a passport that is valid for at least six months from the date of entry into the Kingdom. Although nationals of most countries in Southeast Asia, Europe, America, and Oceania are granted visa on arrival for up to 30 days, some are only granted 15 days, and still others must have visa before arrival. See www.mfa.go.th/internet/document/ChartVisa.pdf for an up to date list of what is required for your country of origin. If still in doubt please contact the Thai embassy in your country for more information. **Important note** : If you require a 'visa before arrival' to enter Thailand, please make sure you obtain a *multiple entry visa* - one for your initial entry to Thailand AND one for your re-entry on returning from Myanmar.

Myanmar

Colona Liveboard guests need not arrange visas in advance to enter Burma. Immigration formalities are carried out aboard MV Giamani and the cruise director will arrange everything for you. In order for things to run smoothly, **must bring along on board:**

- Passport
- 4 passport sized photographs
- 4 copies of the ID Page of their passport
- \$200 US in **unmarked** crisp bills (**note** : immigration officials can and will refuse older/marked/torn bills, please try to obtain new notes, the larger the denomination the better)

It is also worth noting that guests are required to leave their passports with immigration staff at Kaw



Thaung (Burma). We are aware that this is unusual but the Burmese government is not flexible on this issue and it is standard on all Burma liveaboard cruises.

Accommodation upon Arrival in Phuket

As stated above, it is highly recommended that you arrive at least one day prior to your cruise. Colona Liveboards can arrange accommodation for you based on your needs, for our recommended hotels check out www.diving-thailand-phuket.com/index-accommodation.htm. If you require a longer stay either before or after your trip we can, of course, arrange this also.

Transfer to and from MV Giamani

Colona Liveboards provide free transfer from/to the boat on departure and arrival days from anywhere on Phuket Island. Obviously Colona Liveboards need to be informed of the pick up and drop off locations as early as possible. Any late changes that require extra transport over and above our usual may lead to the customer being liable for the extra transfer cost.

Documents to bring along

Aside from the above mentioned immigration documents, the only documents you will need to bring aboard the boat are your diver certification card (remember your Nitrox card if you wish to dive Nitrox), logbook and dive insurance card/certificate.

Insurance

Please note that personal dive insurance is compulsory on board MV Giamani. We also strongly advise that you obtain cancellation insurance in case your trip is cancelled by either party for any unseen reason.

If you do not have your own dive insurance, or cannot provide a policy number, our dive staff can assist you with temporary diving and travel insurance through our agents at INDEPTH insurance on arrival aboard MV Giamani. If you wish to purchase your own insurance in advance we recommend the following:

- DAN USA : www.diversalertnetwork.org
- DAN Europe: www.daneurope.org
- DAN Asia Pacific: www.danseap.org
- DIVE Assure: www.diveassure.com
- Insure My Trip: www.insuremytrip.com (for individuals)
- Insure My Group: www.insuremygroup.com (for groups of over 9 people)

It is also worth noting that on boarding MV Giamani you are required to sign a liability waiver stating that you are on board at your own risk.

Boat Orientation

After boarding MV Giamani the dive team will present the crew and all facilities on board. This will include the boat layout, cabins, general procedures, and the "do's and don'ts" for the duration of your stay on board.

Dive Briefings

Before each dive the dive crew will give a detailed dive briefing. They will present the dive site (including maps) and prevailing diving conditions, as well as information on the aquatic life that may be encountered on each dive site. There will also be a procedures and safety briefing before the first dive. ***Divers must attend the safety briefing and all dive briefings where they intend to dive.***



Diving Equipment

12 litre aluminium tanks (and limited 15 litre tanks at a small extra cost) with both DIN and Yoke attachments, weights (2lb, 0.9kg), and weight belts are all provided on board. Obviously you may bring your own diving equipment but if you prefer to travel light then all equipment is available for rent. The water temperature in the Andaman Sea is generally very pleasant and averages between 27°C and 30°C (80°F - 86°F), although sometimes thermoclines can occur. A 3mm short wetsuit (our standard rental suit) is normally enough, though with 4 dives per day you may want to think about a full length suit particularly if you are susceptible to the cold. Please contact the office a week or so prior to the trip for current water temperatures if you are concerned.

Note that any failure or loss of personal dive equipment will require that you rent equipment on board MV Giamani at the standard published rates, although some spare parts may be available for purchase where possible. If Colona Liveaboards equipment is lost or damaged full replacement cost will be charged at the discretion of the tour leader. Equipment prices are available on board.

It is strongly recommended that you use a dive computer. If you do not own one of your own we have them available for rent on board.

Enriched Air Nitrox

Nitrox is available on board MV Giamani for all EANx certified divers on production of a valid certification card. Our dive staff are also available to teach the EANx course on board for those who are not certified but would like to be.

Our Nitrox on board is prepared using the continuous flow method from pure oxygen which means that we have a potentially limited supply. For this reason we advise that you pre-book your Nitrox package in advance.

Non Diving Activities

During the cruise MV Giamani will often be moored for long periods of time in sheltered bays, so a dip in the water (or a 'running bomb' from the sun deck) is generally possible on most days. Almost all areas will offer some excellent snorkeling too, so grab your mask and fins and away you go. For all in-water activities just check with the Cruise Director to be sure that the boat will not be moving, we like to know where our guests are at all times!

There is almost always an opportunity for island visits from MV Giamani, with several options available. Several islands have stunning beaches where you can simply lounge in the sun or shade and paddle in the shallows. There are also a few official 'jungle walks' that lead to view points that have some spectacular panoramic views over the Similan Islands.

For those requiring entertainment involving less movement an extensive DVD and book library is available on board, as well as a music system that can be connected to most personal music systems.

Electricity Supply

In both Thailand and aboard MV Giamani 220Volt/50Hz is standard with sockets mixed between 2 and/or 3 pin flat and/or round pins. To avoid confusion or disappointment we suggest guests bring at least one travel adapter with you.

You can check the socket system visually at www.travelproducts.com/electricity_guide.htm.



Photo and Video Viewing On Board

As underwater cameras and video become more accessible to the masses we are seeing more guests on board with varying sizes of cameras and housings. To cater for this we have rinse tanks for electrical equipment, camera set up and storage areas, and recharging areas above and below decks. We also have a PC workstation on MV Giamani which can be used for the viewing of digital photos and video. The computer has most necessary card slots, software programs, and a CD burner for you to back up your treasures.

You can also view your video on the computer in the saloon, or on the TV in the outdoor saloon. Most standard cables and card readers are carried by our dive staff though if you are in doubt please bring your own to avoid disappointment.

Clothes and Accessories

With a minimum air temperature in the area of around 23°C (73°F) you will need mainly light clothes, though a sweater or cardigan may be advisable for evenings, especially after night dives. Towels are provided in your cabin though you will need to bring your own personal products such as shower gel, shampoo, toothpaste, shaving foam, etc. Don't forget your sunscreen and sunglasses as the sun is very strong in this region, especially at sea.

Female customers, please be advised that you will need to bring your own sanitary products as these are not available on the boat.

Storage space on board MV Giamani is limited and as such we advise that you carry soft sided luggage if possible, and that any baggage not required on the trip be stored securely at our office. Please make sure that all luggage is clearly labelled. Life on board is casual and so only a few T-shirts, shorts, swim suits, and possibly that sweatshirt for the evening are necessary. As a general rule, the less you bring the more comfortable you are likely to be.

Food and Drink

All meals are a mix of Thai and International Cuisine and are served buffet style aboard MV Giamani. Should you have any special dietary requirements or restrictions please let us know upon booking and we will be more than happy to accommodate wherever possible.

Drinking water, tea, coffee, hot chocolate, and electrolyte drinks are all available 24 hours per day and are free of charge. We also provide free soft drinks at lunch and dinner. Extra soft drinks and alcohol (beer and wine) are available for sale on board and are payable on the boat at the end of the trip. You are welcome to bring your own favourite drinks aboard.

Please note that there is no consumption of alcohol between dives. If alcohol is taken between dives then the guest will not be allowed in the water for the rest of the day.

Currency and Payment

Cruises, diving courses, equipment rental and Nitrox packages can all be paid for before arrival by bank transfer or PayPal, or in the office by cash (THB, US\$, Euro, and GB £) or Visa/Mastercard.

Courses, Nitrox packages, and equipment rental can also be paid for on board at the end of the cruise. Drinks and other sundries will also be included in this bill which can be paid in either US\$, Euro, Thai Baht or GB £.

We also accept Visa and Mastercard though please note that there will be a 3% bank charge on all Visa/Mastercard transactions levied at the time of payment.



Park Fees

The park fees for this trip total 1600 Thai Baht per person. This breaks down as entry to the two national parks (Similan Islands (Ko Bon and Ko Tachai) and Surin Islands/Richelieu Rock) at 400 THB per park per person plus 4 days diving at 200 THB per day. Park fee must be paid on board along with your on board bill. Please be aware that the Thai Forestry Commission set these prices, as such they are out of the control of Colona Liveboards and they are liable to change without notice, as such we do not accept pre-payment in any form.

Tips

It is traditional on liveboard boats in Thailand to tip the crews. They can only accept tips in cash, although any currency is acceptable. Tips are payable on the boat at the end of the cruise and many guests give a gratuity based on 5-10% of the trip price. Please note that tipping is voluntary and the above is a guideline only.



Thailand & Myanmar Cruise Prices

Deluxe Triple Share	77,400 thb
Standard Twin	79,200 thb
Deluxe Twin/Double Share	88,200 thb
Full Charter - up to 12 People	943,200 thb
Full Charter - 13 to 16 People	1,090,800 thb

Costs on board

Rental Equipment

	Price Onboard
Please let us know your requirements and sizes on booking	
Full Set	800 thb
BCD	320 thb
Regulator Set	320 thb
Wetsuit (3mm shorty)	200 thb
Mask & Snorkel	100 thb
Fins (open heel with boots)	200 thb
Dive Computer (not included in full set)	300 thb
15 litre tank	300 thb

Note : All prices above are per day

Diving Courses

	Pre-booked price *	Price Onboard
PADI Advanced Course	6750 thb	7500 thb
SSI Advanced Course	5400 thb	6000 thb
PADI Nitrox Course	6400 thb	7000 thb
SSI Nitrox Course	4950 thb	5500 thb

Note : Others courses are usually available on request. Please ask us about the full range and prices.

Nitrox

	Pre-booked price*	Price Onboard
Enriched Air Nitrox per fill	N/A	250 thb
Enriched Air Nitrox <i>9D/9N package</i>	5625 thb	7500 thb

Others

	Price Onboard
Soft Drinks	30 thb
Beer	70 thb
Wine (per bottle)	800 thb
Wine (per glass)	100 thb
Colona T-shirt	400 thb
Colona Polo Shirt	600 thb
Surface Marker Buoy	1900 thb
Colona Mask Strap	300 thb
Massage - 30 minutes	400 thb
Massage - 1 hour	700 thb

** Please be aware that the 'pre-booked' price is only valid if the item is pre-booked AND pre-paid*